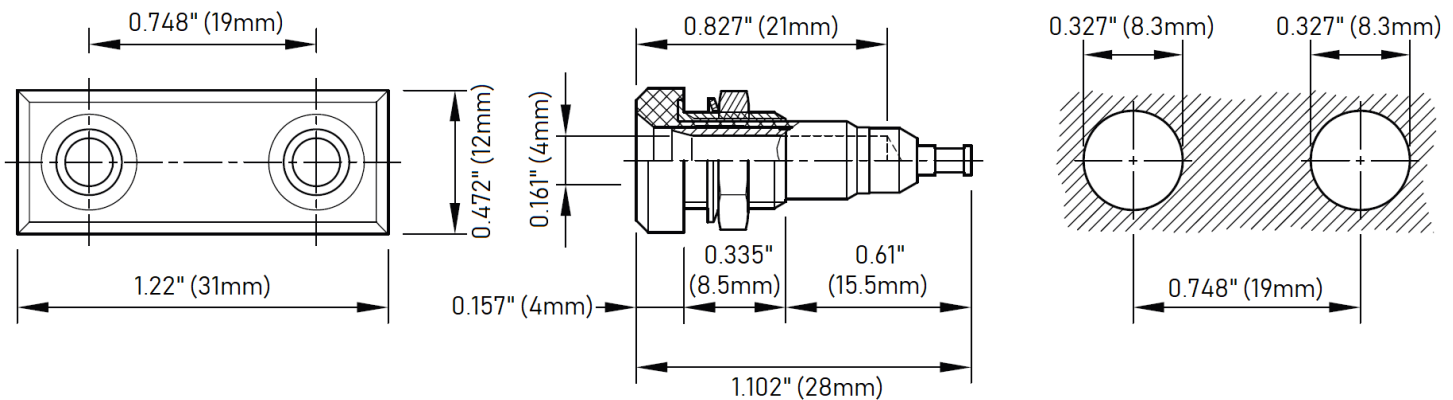


**Model 73101**  
**Panel Mount Double 4mm Banana Jack****Features**

- Convenient one-piece rigid design
- Insulated 4mm double banana jack
- Ideal for screw-mounting onto pre-drilled panels
- Solder turrets for solder connections
- Machined brass
- Includes double banana jack, hex nuts, and washer

**Ratings**

Voltage: 30 V AC / 60 V DC

Current: 25 A

**Ordering Information**

Model: 73101-*color*

**Color:** 0=Black

Panel Mount Double 4mm Banana Jack



# Mouser Electronics

Authorized Distributor

Click to View Pricing, Inventory, Delivery & Lifecycle Information:

Pomona:

73101-0